

# BLACKBOX CONTROL WHAT'S NEWS

## MORE ABOUT FTC

# OPTIMIZE YOUR FUEL TAX CREDITS WITH PRISM



### OPTIMISES CLAIMS

Precision analysis of detailed telematics data combined with our comprehensive mapping ensures you always claim your full entitlement and have evidence to substantiate the claim.



### IMPROVES CASHFLOW

By automating your FTC analysis on a monthly cycle, you can claim your entitlement at the earliest point in time, ensuring you're not leaving money on the table.



### LOWERS COST

Automation removes the need for manual work, saving you time while reducing the risk of errors. Our low fixed fee per vehicle charge ensures you know your costs well in advance.

The Australian Fuel Tax Act 2006 entitles operators of commercial vehicles to a tax credit for fuel used for a set of eligible activities. At the time of writing (February 2019) these were:

- ➔ Fuel used for travelling on a non-public road in any commercial vehicle
- ➔ Fuel used for travelling on a public road in a heavy (over 4.5 tonnes GVM) commercial vehicle
- ➔ Fuel used for operating auxiliary equipment attached to a vehicle

Each activity attracts a different tax credit rate for different fuel types which is updated at various times throughout the year. Please refer to the ATO's website for the full set of current and historic FTC rates.

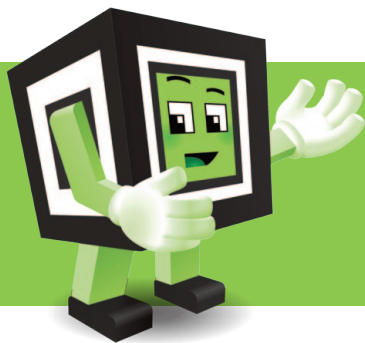
**PRISM can improve the quality, accuracy and efficiency of your FTC calculations and outcomes using advanced GPS analytics and your existing telematics data!**

## WHAT PRISM DOES

PRISM is a purpose-built data analysis engine that connects with your existing telematics system. It enables you to automate the complex analysis of vehicle activity data, captured through your telematic, and apportion fuel use to public and private roads.

This FTC calculation service provides the PRISM engine with detailed mapping data covering the whole of Australia and FTC-specific calculations executed automatically and at scale.

**This means you get the most accurate FTC analysis available each month automatically, saving you time and money. >>[LEARN MORE HERE](#)**



**BLACKBOX CONTROL WOULD LIKE TO WISH OUR CLIENTS A HAPPY AND PROSPEROUS 2020! And to remind you we are right by your side to help keep YOUR business on track!**

**BLACK  
BOX  
CONTROL**

**1300 766 764**  
[www.blackboxcontrol.com.au](http://www.blackboxcontrol.com.au)



NEW SYSTEM ANNOUNCEMENT

# POS (POINT OF SALE) STREAMLINING OPERATIONS AND COMMUNICATIONS

We are pleased to officially announce the introduction of a new system within BlackBox - **POS** which allows us to streamline operations and enhance internal communication across multiple departments to provide a more comprehensive and improved support experience for customers.

You will see a new invoice layout and the new system allows us the ability to connect online quotes, orders, customer service, scheduling, debtor management, operations and dispatch into one system.

**With continuous improvement our system is here to provide a greater client experience. If you have any questions or require any assistance please contact Mary - 1300 766 764.**



## OUT AND ABOUT BBQ FOR BUSHFIRES AND LIFEBLOOD

From the entire team at BlackBox Control we wish to say thank you for the support of our BBQ for Bushfires fundraiser. **Through your generosity we were able to exceed our donation goal, raising more than \$3500 for WIRES, Red Cross and NSW Rural Fire Service.** The donations we received in support of this fundraiser were so plentiful, we were able to put together two hampers to be awarded to the winner of the raffle and sell a number of items in the silent auction. Thank you to everyone who donated an item, placed a bid or bought a raffle ticket.

**THE DAY WAS A HUGE SUCCESS** and we are so grateful to be in business with such a generous community. As the bushfires continue, BlackBox Control will continue to offer ongoing support.



**1300 766 764**  
[www.blackboxcontrol.com.au](http://www.blackboxcontrol.com.au)  
119 Kewdale Road Kewdale WA 6105

